

Perfect
Vision

Leading Innovation to Build an Intelligent Future



مصنع الرؤية المثالية للصناعة
PERFECT VISION FACTORY

رؤية
VISION
2030
المملكة العربية السعودية
KINGDOM OF SAUDI ARABIA

About the Company

Perfect Vision is a smart high-tech factory that develops and manufactures innovative products and solutions based on the latest technologies of the Fourth Industrial Revolution (4IR), such as IIoT, IoT, AI, robotics, machine learning, big data, analytics, integration, monitoring, customization, edge computing, and immersive technology.

Vision

World Leader in Technological Transitions for a Sustainable Future.

Mission

Leverage the power of path-breaking technologies and deployment of operational excellence with stakeholder engagement to provide cutting-edge solutions, in order to transform lives, advance human progress and protect nature.

1



VALUES

Client First
Accountable
Safety
Collaboration

Agility
Diversity
Ethical

• **CASCADE**



Engr. Saleh Awad

Message from the CEO

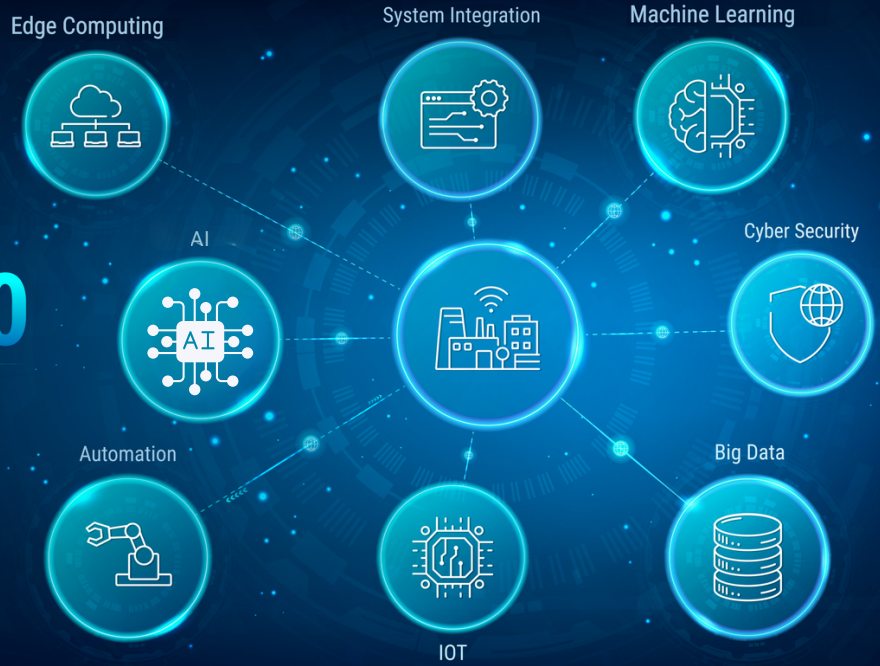
Perfect Vision is known for its products with world class standards in the safety solutions arena. Starting from basic customization to the most sophisticated AI-Powered Solutions, Perfect Vision's innovative solutions have played an essential role in solving partners' most complex challenges by deeply understanding and addressing their core issues and delivering the best solutions.

We have developed various products in the field of Occupational Health and Safety with first-rate standards to help decrease the odds of worksite accidents while enhancing sustainability. When it comes to accident prevention, precision is everything. Our products are powered by the leading-edge AI processor and advanced computer algorithms that detect unsafe working with unrivaled accuracy. Our solutions for the logistics and transportation industry are the most advanced in the market, with unmatched features that will boost our customers' efficiency and productivity.

Proudly, our comprehensive range of solutions, including Industrial Internet of Things (IIoT), Artificial Intelligence of Things (AIoT), and Internet of Things (IoT) are being progressively developed in-house under the supervision of Perfect Vision's talented engineers and researchers. By leveraging the power of AI and other latest cutting-edge technologies businesses can create a safer environment for their employees and protect their bottom line.

I welcome you to the world of safe workplace and to be a partner with us in ensuring international safety standards in the workplaces and in our daily life.

INDUSTRY 4.0



Leading The Fourth Industrial Revolution in KSA

3



Higher Productivity



Agile Processes



Reduced Costs



Increased Revenues



Better Workplace



Improved Communication



Customer Satisfaction

Solutions & Services



Total Worksite Management Platform



IoT Worksite Monitoring & Asset Optimization



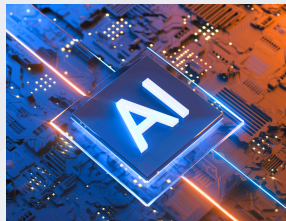
Smart Waste Management



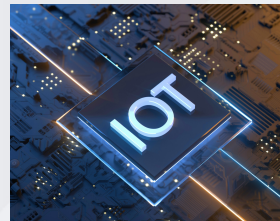
ICT Manufacturing



Research & Development



AI Infrastructure Technology



IoT Consultation & Development



For more solutions, Scan the QR.

Products



Proximity Warning & Alert System - PWAS



LMI - Load Moment Indicator



DMS - Driver Monitoring System



Air Quality Monitoring System



Smart IoT Helmet



Portable Gas Detector



Automatic Fire Suppression System for Heavy Vehicle

For Products Specifications & Datasheets, Please Scan the QR In the Product's Page

TOTAL WORKSITE MANAGEMENT PLATFORM



The **The Total Worksite Management Platform** is an all-in-one comprehensive solution for managing Health, Safety, Environment and Operations at your worksite; providing the tools and capabilities needed to monitor and ensure optimum productivity, efficiency and environmental compliance. With this platform, you can start managing your worksite smartly, utilizing the power of data, AI, and IoT.



Productivity Enhancement



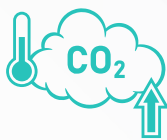
Control Room NOC/SOC



Carbon Live Calculation



Safety PPE AI Monitoring



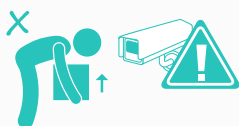
Tracking Emissions Offsetting



Hazard & Risk Management



Loss Prevention



Unsafe Postures Detection



Maintenance Schedules



Sustainability Module



Reporting & Analysis



Fuel Monitoring



Workplace Wellbeing



Data Source Integration



Document Control



Chemical Management



Equipment & Asset Monitoring



Trigger Reminders & Notifications



Workflows & Customization Capabilities

Environmental Emissions Management

Track, Calculate, and Verify Your Environmental Emissions

According to several studies and sources, the total carbon emission from heavy vehicles in Saudi Arabia (including heavy construction equipment and heavy truck) reach roughly about 40 million tonnes** CO2 per year.



**Integrate
Environmental
Sensors**



**Monitor
Equipment
Emissions**



**Analyze &
Optimize Your
Progress**

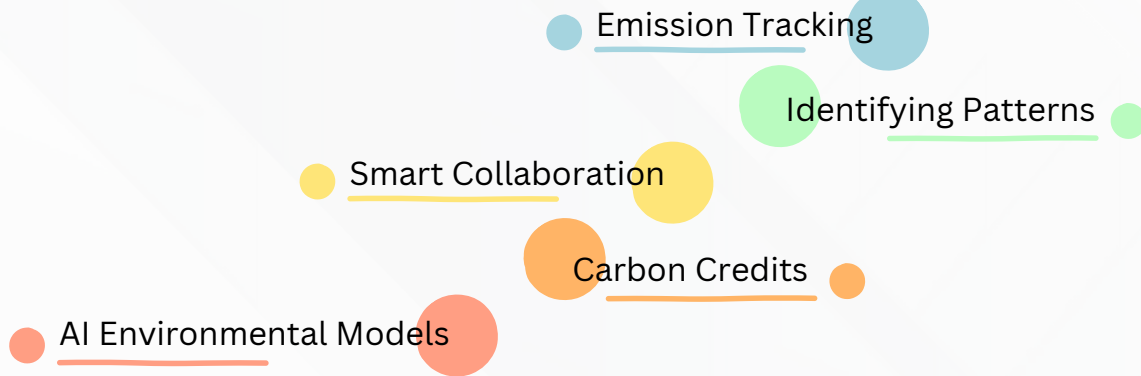
**Reports Generation,
Corrective Actions,
AI/IoT Insights**

**Real Time Data
Acquisition, Full Site
Operations Visibility**

**Operating Time,
Distance Travelled.
Loading Data, etc.**

**** According to the average emissions of total numbers of heavy construction equipment and heavy truck. For more info, refer to KAPSARC (King Abdullah Petroleum Studies and Research Center). ----> Report Dec 2021.**

Smart Emission Management

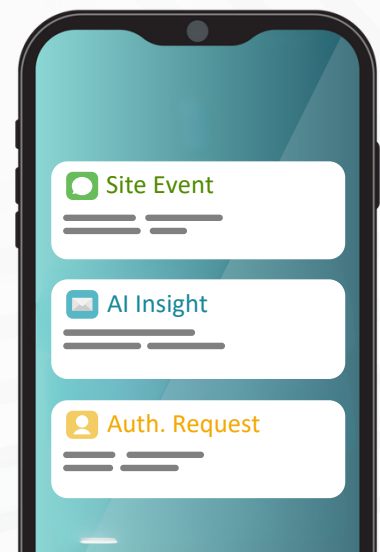


Supporting Sustainable Development While Minimizing Environmental Impact.

Emissions
85 Tons



Metered CO2
-21%



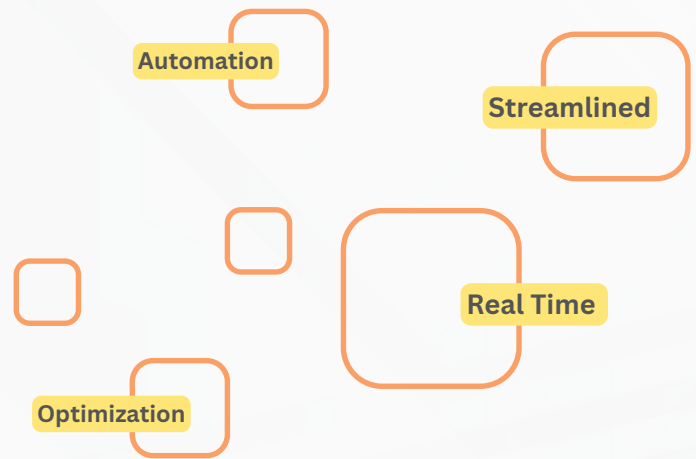
Operations & Logistics Management

OPTi LOGS

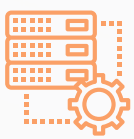
A flexible and scalable AI platform that can integrate seamlessly with any equipment and data source; utilizing PV IoT platform to adapt to your specific operations and logistics needs.

Benefits of OptiLogs:

- **Transform Equipment Data** into insightful reports and dashboards.
- **CAN Data** to monitor the performance and the status of your vehicle, like fuel consumption, temperature, etc.
- **Apply Predictive Analytics** for effective resource allocation and risk mitigation.
- **Automate and Control** various worksites operations, safety and security measures.
- **Telematics Data** for real time visibility and optimization of fleet operations.
- **Monitor Driver Behavior** to detect unsafe actions, provide feedback and enhance efficiency.
- **Track Environmental Impact** to reduce emissions and carbon footprint.



8



Predictive Maintenance



Vehicle Health & Status



Route Optimization



Asset Management



Fuel Consumption

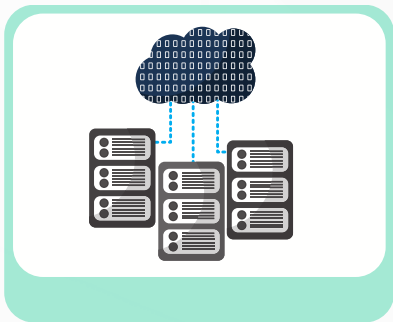


AI Analytics & Insights

Fleet CAPEX and OPEX Management

Unlock Your Fleet True Potential

By leveraging the Financial Analytics features in the platform, you will gain real-time visibility of data from your fleet of heavy equipment and other assets, plus access to advanced analytics and insights tools to optimize your costs and profitability.



**Connect Your
Data**



**Analyze Your
ROI**



**Optimize Your
Decisions**

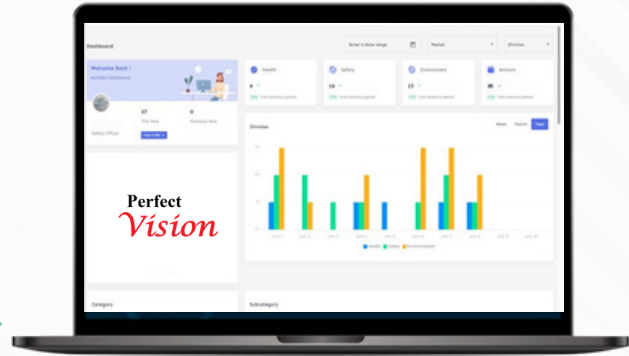
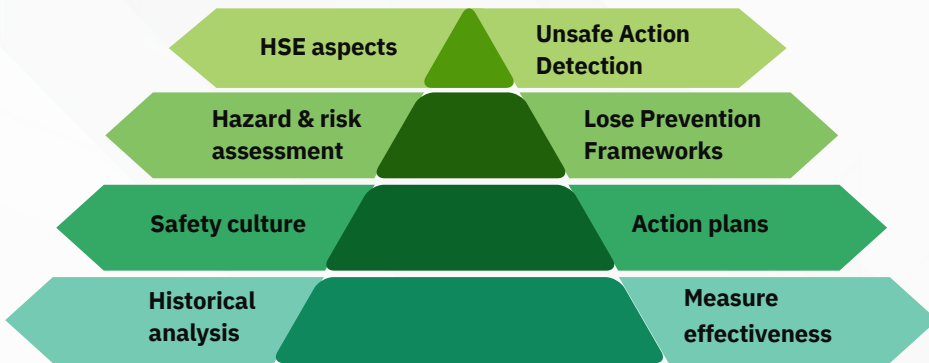
Track and compare the performance and ROI of your assets, simulate different scenarios, and make data-driven decisions.



The Fleet Financial Platform Offers:

- A comprehensive suite of financial features to manage your costs and profitability.
- Integration with your existing infrastructure systems for data consistency and accuracy.
- Rich and customizable set of reports and dashboards to uncover financial insights.
- Utilization of the AI engine capabilities to enhance your decision making.

Health & Safety Management



Solution Applications

Empowering HSE Leaders & Protecting Worksites:

- Construction
- Factories & Warehouses
- Oil & Gas
- Port Yards
- Mining, etc

Benefits of HSE Management Platform

1 Streamline and centralize

2 Better-equipped team

3 Track performance

4 Analytical reports

5 Safe-guard

6 Compare performance

7 Enhance compliance





Proximity Warning & Alert System - PWAS



- AI Camera PWAS
- People & Objects Detection
- No Down Time
- Customizable Range
- Multi-Language Alarm



Why PWAS?



Workplace injury

142

Workers killed at work in 2020/21

441,000

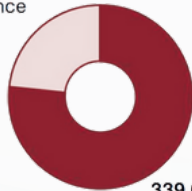
Workers sustaining a non-fatal injury according to self-reports from the Labour Force Survey in 2020/21

51,211

Employee non-fatal injuries reported by employers under RIDDOR in 2020/21

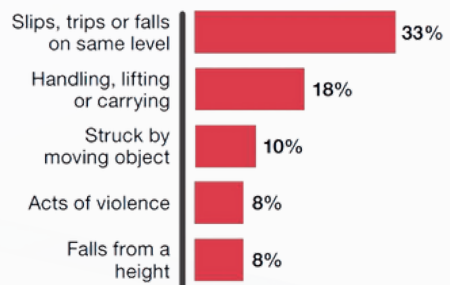
Estimated self-reported non-fatal injuries, 2020/21

102,000
Injuries with over 7 days absence



339,000
Injuries with up to 7 days absence

Non-fatal injuries to employees by most common accident kinds (as reported by employers), 2020/21



Estimated self-reported workplace non-fatal injury per 100,000 workers

**** Report source: Non-fatal injuries reported under RIDDOR 2020/21**

System Explained:

B-Safe (PWAS) Proximity Warning and Alert Systems are designed to create a safe detection zone around people and vehicles to prevent accidents and promote worksite safety. By utilizing advanced sensor technology, B-Safe systems can detect the proximity of individuals and vehicles; and issue an alarm to warn operators of any potential hazards.

B-Safe comes in several types of systems to suit different worksite requirements. These include AI PWAS, Tag-Based PWAS, Non-Tag-Based PWAS, Forklift PWAS, and Combo PWAS. **AI PWAS** is considered the most advanced solution, as it utilizes artificial intelligence (AI camera) to enhance the safety of your worksite. AI PWAS can accurately detect and recognize when workers cross the detection safety zone using advanced computer vision algorithms to alert the workers and the operators of any collision risks visual audible and visual alarm.



13

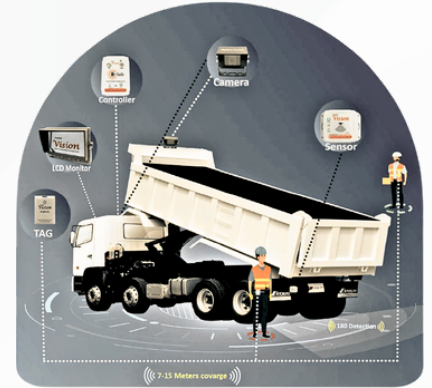


Types of PWAS

Tag Based PWAS



COMBO PWAS (Tag & Non Tag Based PWAS)



AI PWAS



Non Tag Based - PWAS



Forklift Solutions PWAS



DRIVER MONITORING SYSTEM

AI ADVANCED BEHAVIOR RECOGNITION

ABOUT THE SOLUTION

Driver Monitoring System (DMS) is an intelligent system designed to enhance safety and improve the efficiency of a company's vehicle fleet. By utilizing advanced monitoring and analysis capabilities, DMS helps to optimize functionality, productivity and costs associated with operations and maintenance.



Benefits of DMS:

- GPS Real-Time Combined with Insights
- Enhancing the Safety of the Driver, Vehicle and Pedestrian
- Customized Reports to Improve Efficiency and Reduce Cost
- Better Fuel Consumption
- Improving Vehicle Maintenance
- Optimized and Effective Route Planning

AI Behavior Monitoring

AI based camera to monitor various human behaviors, to ensure driver safety.

The camera will detect the signs of fatigue, smoking, and mobile device usage, and the system will alert the driver about potential violations.



Smoking



Look-Aside



Fatigue/Yawn



Calling



Advanced Driver Assistance System (ADAS)

By leveraging the capabilities of the ADAS technology, the driver will have access to a wide range of advanced safety features, including :

- Lane Departure Warning (LDW)
- Forward Collision Warning (FCW)
- Pedestrian Detection Warning
- Overspeed Warning



WiFi



GPS



Loop Recording



Live Video Streaming



4G/LTE



2TB HDD Supported



Load Moment Indicator - LMI



ABOUT THE SOLUTION

The Digital MEMS Inclinometer System, matching ASME-B30.14-2015 & ARAMCO STANDARD, has been developed by Perfect Vision for crane's sideboom safety, especially used for real-time monitoring, preventing the crane from operating under dangerous conditions. This solution can effectively improve the safety of lifting equipment, including sideboom, boom truck, etc.

LMI Load Sensor

Load Sensor has the capability of detecting the angle and weight of the load lifted. Specifically, this sensor is critical when hook height cannot be compromised.



LMI Control Module & Display Monitor

This is the main display, cable/wireless receiver and control module for the PV LMI System. Sensor transmissions are received through this panel and are clearly displayed for the operator. The display panel supports all software logic and menu interface are loaded and is typically mounted in the operator's field.

LMI Limit Switch

- Separate "o-ring sealed" battery compartment with captive screws.
- Potted electronics and boot-sealed piston assembly for increased waterproofing.
- A2B Switch bracket design allows for easy addition and removal of A2B Switch from boom tip.



Types of LMI

Our LMI Solutions are customizable as per the client's needs and provide configurations for various lifting equipment.



□ Sideboom

□ Crawler Crane



□ Articulated Crane



□ Boom Truck



SMART IOT HELMET

ABOUT THE SOLUTION

At the worksite, helmet is the most important PPE. The **Smart IoT Helmet** takes safety to the next level with advanced technology and real-time data on surroundings, providing an all-round protection.



**Real-Time
Monitoring**



**Emergency
Alert**



Live Feed



**Fall Down
Alarm**



**IP67
Waterproof &
Dustproof**



**Anti-Collision
Warning &
Alerting**



**Heart Rate
Detection**



**Hat Off
Alarm**



**Cloud
Connectivity**



**Indicator
Flashlight**



**Temperature
Detection**



**No Response
Alarm**

Video Transmission with 4G Network

Allows command center monitor real-time video from staff on site, give precise command remotely.

01

Hat Off Alarm

If the staff did not wear helmet, both the staff and command will receive alarm.

02

Electronic Fence

Command center can create certain area which prohibit worker to enter or exit. Provided safety assurance and convenience when managing team.

03

SOS Button

Built-in SOS system. The staff can be rescued in case of an emergency situation.

04

GPS Tracking

Check the real-time position of staff, improve total control and simplify staff transfer.

05

Track Playback

Command Center can playback the moving track of staffs in certain time period, helps manager to trace back and check the work history.

06



Applications

Railway

Engineering

Energy

Mining

Electricity

Pylon

Dock

Manufacture



PORTABLE GAS DETECTOR

ABOUT THE SOLUTION



The **Portable Gas Detector** will reliably detect several types of gases including LEL, O₂, H₂S, & CO. The gas sensor can be flexibly selected according to the field requirements. Based on our advanced sensor technology and IP66, the compact design will redefine safety in the most harsh environments.

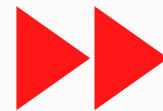
FEATURES



Multiple Gas Types



H₂S, CO, O₂, LEL



Fast Response



Sound, Light, Vibration



PC, ABS, Rubber Protection



Type-C USB Rechargeable Battery



Confined Space Usage



Dustproof & Waterproof



Continuous Detection



AUTOMATIC FIRE SUPPRESSION SYSTEM FOR HEAVY VEHICLE

ABOUT THE SOLUTION



The **Heavy Vehicle Fire Suppression System** is most commonly used for automatic fire detection and extinguish in heavy duty vehicles, industrial equipment, mining, vehicles like truck, tractor, bus, on-road equipment and off-road equipment. Because, they are non-conductive, and can be utilized not only to quell fires in ordinary combustible materials, but also on flammable liquid fires that involve live electrical equipment.



Detect



Start




Extinguish





Dry Powder, Foam


ECE R107 & CE Certified


Auto Cooling


Fast Detection


Harsh Environment


Real-Time Temperature




Refillable


130-170 Customized Detection


Manual Activation

AIR QUALITY MONITORING SYSTEM

PAVING THE WAY TOWARDS NET ZERO

ABOUT THE SOLUTION



The **Air Quality Monitoring System (AQMS)** can measure outdoor air pollutants in real-time, measuring data quickly and accurately. AQMS can be customized for different demands and applications.



All-in-One Solution



Carbon Monoxide



Particulate Matter



O3, NO2, SO2



Humidity Measurement



Temperature Measurement



Noise Monitoring



Barometric Pressure



Wind Speed



Wind Direction



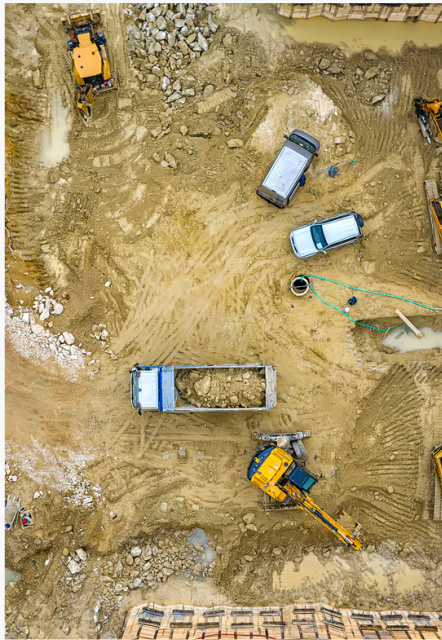
Alarm Function



Remote Parameter Adjustment

Applications of AQMS

Oil & Gas, Construction, Smart Cities, Mining & Quarrying, Cement Plants, Recycling Plants, Environmental Compliance Monitoring, Factories & Industrial Fenceline, etc.



IOT

Why Choose Perfect Vision Products?

A. Our products are meeting international environmental standards.

We choose high quality raw materials and components in our products, and use world-class manufacturing processes to ensure that our products meet international environmental standards. Our products can withstand the most extreme and harsh environments, thanks to our extensive testing during the development and manufacturing stages in the real workplace settings. We have overcome many challenges to offer the best safety solutions to our clients.

B. We provide excellent services including after sales services with 24/7 Customer Support.

We do not just sell products, we build partnerships. We care about our customers and their satisfaction. That is why we offer after-sale services with 24/7 customer support. Our unparalleled commitment to support our partners is what sets us apart. We are committed to providing excellent services to our customers. Our customer support team is dedicated to resolve any issues pertaining to our products and services, exceeding the expectations of our customers towards customer delight.

C. All features are customizable as required.

Our solutions are the result of our in-house innovation and expertise. Our high-tech labs are manned by highly educated and talented engineers, and researchers who have the know-how to create cutting-edge products and solutions. Whether you need simple system adjustments, additional features, or integration with other solutions, our R&D department will support you to fulfil your requirements.


D. We offer competitive prices.

We believe that quality and price can go hand in hand. Customers often assume that high price means high quality, but that is not always true. Our innovative approach allows us to deliver exceptional quality products with top-notch customer services at very competitive prices.

E. We provide technical training.

We very well know that training is essential to prevent accidents in the worksites. According to HSE studies, about 32% of the accidents are caused by lack of adequate training. This is the reason why we provide appropriate technical training regarding safety solutions to our customers. We ensure that our customers understand and use our safety solutions effectively and safely.

Certificates


أرامكو السعودية
saudi aramco

Saudi Aramco E-Reference No. 0000450

Registration Approval Letter

April 30, 2019

Attention : **PERFECT VISION FACTORY**

CR Number: 205926295
 Country: Saudi Arabia

We are pleased to inform you that PERFECT VISION FACTORY is now registered in the Saudi Aramco Supplier Management System under Vendor Code No. 10064254, provided your company continues to meet all relevant Saudi Arabian and Saudi Aramco standards.

This registration, however, should not be construed as a commitment by Saudi Aramco to procure from you. Being registered as a supplier only grants your company the opportunity, along with other registered sources, to respond to requests for submitting proposals in accordance with Saudi Aramco's established policies and procedures. All procurement instruments including but not limited to service contracts, purchase agreements, or purchase orders will be issued based on the name and address included in your commercial registration (CR), as stated in your Supplier Registration.

Saudi Aramco wishes to remind you that being recognized as a supplier carries with it serious obligations and responsibilities to act in a legal and ethical manner. We wish to remind you of the Saudi Aramco Supplier Code of Conduct (SCOC) which you acknowledged. Failure to abide by the principles set forth in the SCOC can result in adverse actions being taken by Saudi Aramco against you including suspension of you as a supplier. Saudi Aramco also expects each of its suppliers to satisfy each of the requirements of any procurement instrument which might be placed and to act responsibly and reliably as a supply chain supplier. Material Suppliers should apply for Saudi Aramco Supplier Portal access by forwarding a request to portal-registration@aramco.com. The Supplier Portal is the main electronic business tool used between Saudi Aramco and its suppliers and serves to improve the flow and accuracy of key supply chain information.

For further information or assistance please contact the Saudi Aramco Supplier Help Desk by forwarding a request to SupplierHelpDesk@aramco.com or via the unified call center +966 (13) 874-2222.

Dawoud Suliman Al Nuwais, Supervisor
Supplier Registration & Qualification Unit
Supplier Registration & Qualification Unit

It is the responsibility of the supplier to update Saudi Aramco Supplier Registration Profile through Arriba for the following:

1. Change of Name / Commercial Registration Number / Address / Owners(s)
2. Any change of the supplier location
3. Discontinue supply of approved commodities (PCOBs and 9CATS)

This is an electronically generated letter by Saudi Aramco. To verify Supplier approval status, please contact Supplier Help Desk at supplierhelpdesk@aramco.com


Certificate of Registration
 (Environmental Management System)
QFS MANAGEMENT SYSTEMS LLP

This is to Certify that the Environmental Management System of

PERFECT VISION FACTORY
 AL JUBAIL - 10335, SAUDI ARABIA

is in accordance with the requirement of the Environmental Management System Standard detailed below

ISO 14001:2015

This certificate is valid for the following product or service range
 DESIGN, MANUFACTURING, SALE, INSTALLATION AND MAINTENANCE OF PCB, ELECTRONICS DEVICES, APPLICATION SYSTEM INTEGRATION WITH IT, ENABLING DEVICES, SECURITY SYSTEMS, AND MILITARY TELECOMMUNICATION DEVICES, ACCESSORIES, AND CONTROL SYSTEM, CCTV DEVICES AND FLEET MANAGEMENT SYSTEM & IOT DEVICES.

Certificate Number: INT/2212PE/3533 Surv. Audit on or Before: 08.11.2023
 Initial Date of Certification: 09.12.2022 Re-certification Due on: 08.12.2025
 Date of Certificate: 09.12.2022
 Date of Expiry: 08.12.2023


IAF
 ACCREDITED
 MSA 114

Director:  Date: 09.12.2022

The validity of certificate is subject to regular surveillance audit on or before above mentioned dates and its only valid after successful surveillance with continuation letter issued by QFS. It is issued subject to the continued availability of access at any time and without notice to the above named organization's premises for the purpose of assessment and surveillance regarding the standard named above and QFS terms and conditions.

QFS MANAGEMENT SYSTEMS LLP
 16, NADA 20701, LLP
 1000 MERCER ST, SEATTLE, WA 98109-5578, UNITED STATES
 www.qfsmss.com
 email: admin@qfsmss.com

Accredited by International Accreditation Service, Inc
 3600 SALTWATER STREET, SUITE 100, BREA, CALIFORNIA 92821, U.S.A


Certificate of Registration
 (Information Security Management System)
QFS MANAGEMENT SYSTEMS LLP

This is to Certify that the Information Security Management System of

PERFECT VISION FACTORY
 AL JUBAIL - 10335, SAUDI ARABIA

Has been found to be of the Information Security Management System Standard

ISO/IEC 27001:2013

This certificate is valid for the following product or service range
 DESIGN, MANUFACTURING, SALE, INSTALLATION & MAINTENANCE OF PCB, ELECTRONICS DEVICES, IT ENABLING DEVICES, APPLICATION, SYSTEM INTEGRATION, ICT, SECURITY SYSTEMS, INFRASTRUCTURE, SOFTWARE ANALYSIS AND DEVELOPMENT, MILITARY TELECOMMUNICATION DEVICES, ACCESSORIES, CONTROL SYSTEM, CCTV DEVICES, FLEET MANAGEMENT SYSTEM & IOT DEVICES.
 PVS/ISA, VERSION: 6 | DATE: 11.02.22

Certificate Number: INT/2206PI/2736 Surv. Audit on or Before: 21.05.2023
 Initial Date of Certification: 22.06.2022 Re-certification Due on: 21.06.2025
 Date of Certificate: 22.06.2022
 Date of Expiry: 21.06.2023


IAF
 ACCREDITED
 MSA 114

Director:  Date: 22.06.2022

The validity of certificate is subject to regular surveillance audit on or before above mentioned dates and its only valid after successful surveillance with continuation letter issued by QFS. It is issued subject to the continued availability of access at any time and without notice to the above named organization's premises for the purpose of assessment and surveillance regarding the standard named above and QFS terms and conditions.

QFS MANAGEMENT SYSTEMS LLP
 16, NADA 20701, LLP
 1000 MERCER ST, SEATTLE, WA 98109-5578, UNITED STATES
 www.qfsmss.com
 email: admin@qfsmss.com

This Certificate remains the property of QFS

iktva

CE

SAUDI MADE


CERTIFIED
ISO
9001:2015
COMPANY


هيئة المحتوى المحلي
والمشتريات الحكومية
Local Content & Government Procurement Authority


Certificate of Registration
 (Occupational Health & Safety Management System)
QFS MANAGEMENT SYSTEMS LLP

This is to Certify that the Occupational Health & Safety Management System of

PERFECT VISION FACTORY
 AL JUBAIL - 10335, SAUDI ARABIA

is in accordance with the requirement of the Management System Standard detailed below

ISO 45001:2018

This certificate is valid for the following product or service range
 DESIGN, MANUFACTURING, SALE, INSTALLATION AND MAINTENANCE OF PCB, ELECTRONICS DEVICES, IT ENABLING DEVICES, APPLICATION, SYSTEM INTEGRATION, ICT, SECURITY SYSTEMS, AND INFRASTRUCTURE, SOFTWARE ANALYSIS AND DEVELOPMENT, MILITARY TELECOMMUNICATION DEVICES, ACCESSORIES, AND CONTROL SYSTEM, CCTV DEVICES AND FLEET MANAGEMENT SYSTEM & IOT DEVICES.

Certificate Number: INT/2206PI/2735 Surv. Audit on or Before: 21.05.2023
 Initial Date of Certification: 22.06.2022 Re-certification Due on: 21.06.2025
 Date of Certificate: 22.06.2022
 Date of Expiry: 21.06.2023


IAF
 ACCREDITED
 MSA 114

Director:  Date: 22.06.2022

The validity of certificate is subject to regular surveillance audit on or before above mentioned dates and its only valid after successful surveillance with continuation letter issued by QFS. It is issued subject to the continued availability of access at any time and without notice to the above named organization's premises for the purpose of assessment and surveillance regarding the standard named above and QFS terms and conditions.

QFS MANAGEMENT SYSTEMS LLP
 16, NADA 20701, LLP
 1000 MERCER ST, SEATTLE, WA 98109-5578, UNITED STATES
 www.qfsmss.com
 email: admin@qfsmss.com

This Certificate remains the property of QFS


Certificate of Registration
 (Quality Management System)
QFS MANAGEMENT SYSTEMS LLP

This is to Certify that the Quality Management System of

PERFECT VISION FACTORY
 AL JUBAIL - 10335, SAUDI ARABIA

Has been found to be of the Quality Management System Standard

ISO 9001:2015

This certificate is valid for the following product or service range
 DESIGN, MANUFACTURING, SALE, INSTALLATION AND MAINTENANCE OF PCB, ELECTRONICS DEVICES, IT ENABLING DEVICES, APPLICATION, SYSTEM INTEGRATION, ICT, SECURITY SYSTEMS, AND INFRASTRUCTURE, SOFTWARE ANALYSIS AND DEVELOPMENT, MILITARY TELECOMMUNICATION DEVICES, ACCESSORIES, AND CONTROL SYSTEM, CCTV DEVICES AND FLEET MANAGEMENT SYSTEM & IOT DEVICES.

Certificate Number: INT/2206PI/2733 Surv. Audit on or Before: 21.05.2023
 Initial Date of Certification: 22.06.2022 Re-certification Due on: 21.06.2025
 Date of Certificate: 22.06.2022
 Date of Expiry: 21.06.2023


IAF
 ACCREDITED
 MSA 114

Director:  Date: 22.06.2022

The validity of certificate is subject to regular surveillance audit on or before above mentioned dates and its only valid after successful surveillance with continuation letter issued by QFS. It is issued subject to the continued availability of access at any time and without notice to the above named organization's premises for the purpose of assessment and surveillance regarding the standard named above and QFS terms and conditions.

QFS MANAGEMENT SYSTEMS LLP
 16, NADA 20701, LLP
 1000 MERCER ST, SEATTLE, WA 98109-5578, UNITED STATES
 www.qfsmss.com
 email: admin@qfsmss.com

This Certificate remains the property of QFS

Clients & Vendors



أرامكو السعودية
saudi aramco



Perfect
Vision

Leading Innovation to Build an Intelligent Future

Contact Us



+966 59 888 1117
+966 13 893 3338



Info@perfectvisionksa.com



Corporate Office Address:
Perfect Vision, No. 4292, 4th Floor,
Novotel Business Park, King Fahad
Road, Al Khalidiyah Ash Shamaliyah
Dist., Dammam 32232, Eastern
Province, Kingdom of Saudi Arabia



Factory Address:
No.7300, 39 street, 2nd Industrial Area,
Dammam, Kingdom of Saudi Arabia



www.perfectvisionksa.com